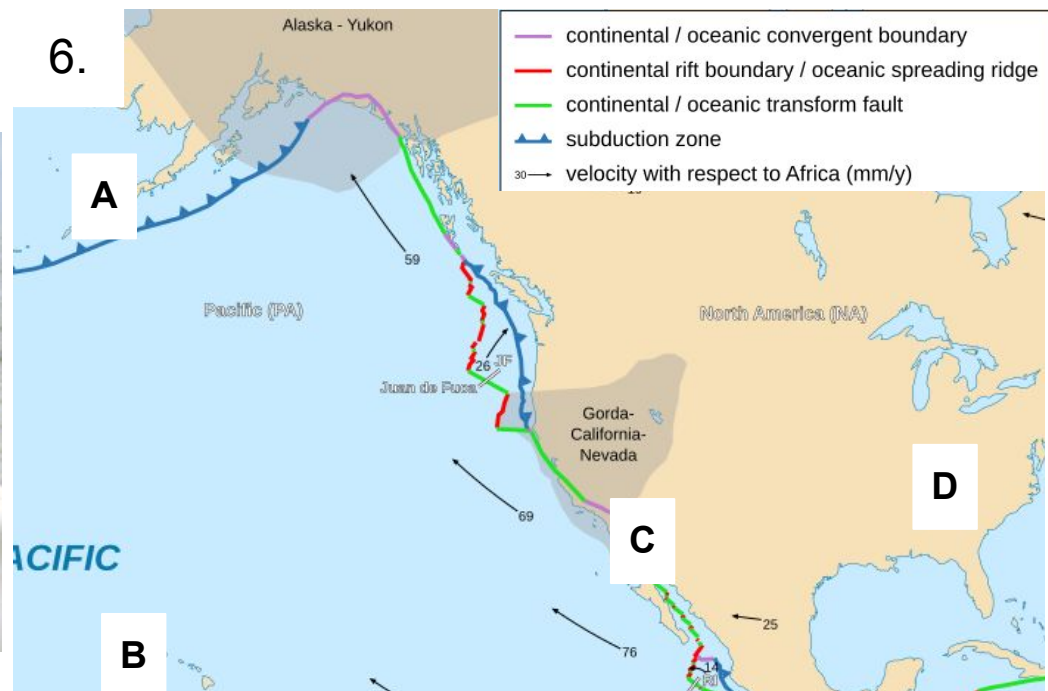


4.

Station 1

5.

6.



Station 2

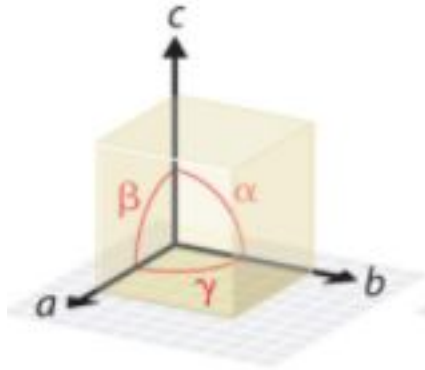
9.



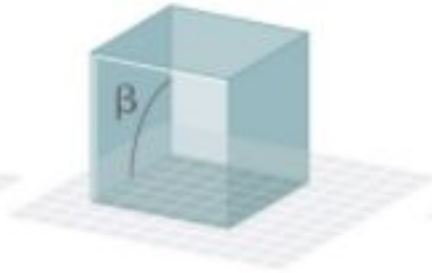
10.



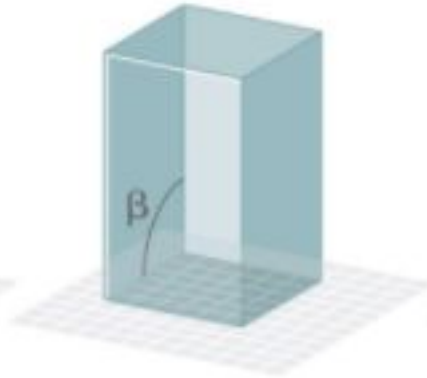
Station 2



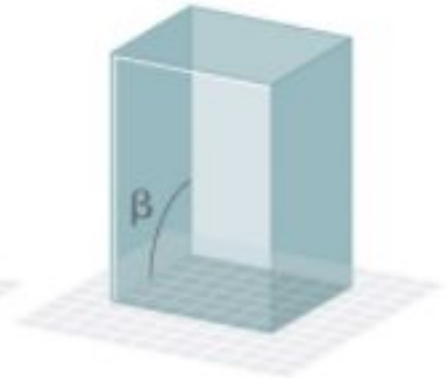
Edges and angles



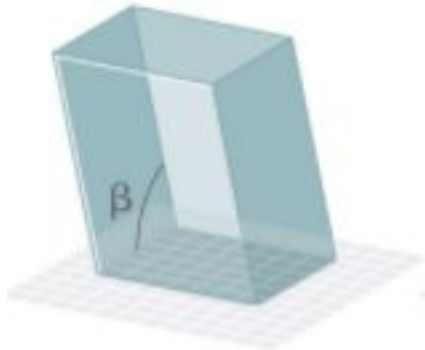
A. Cubic



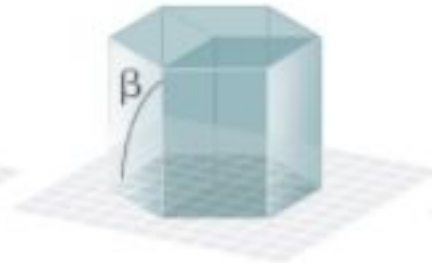
B. Tetragonal



C. Orthorhombic



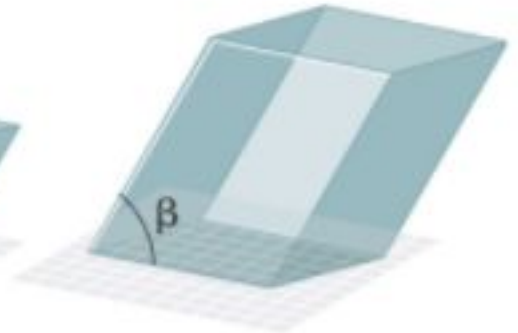
D. Monoclinic



E. Hexagonal



F. Rhombohedral



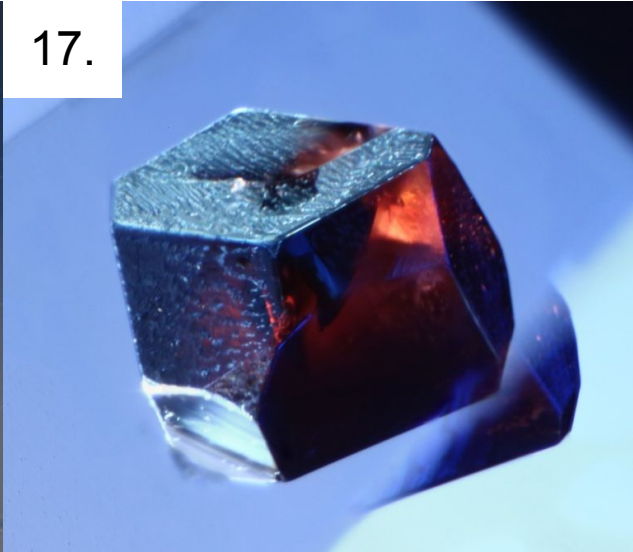
G. Triclinic

Station 3

16.



17.

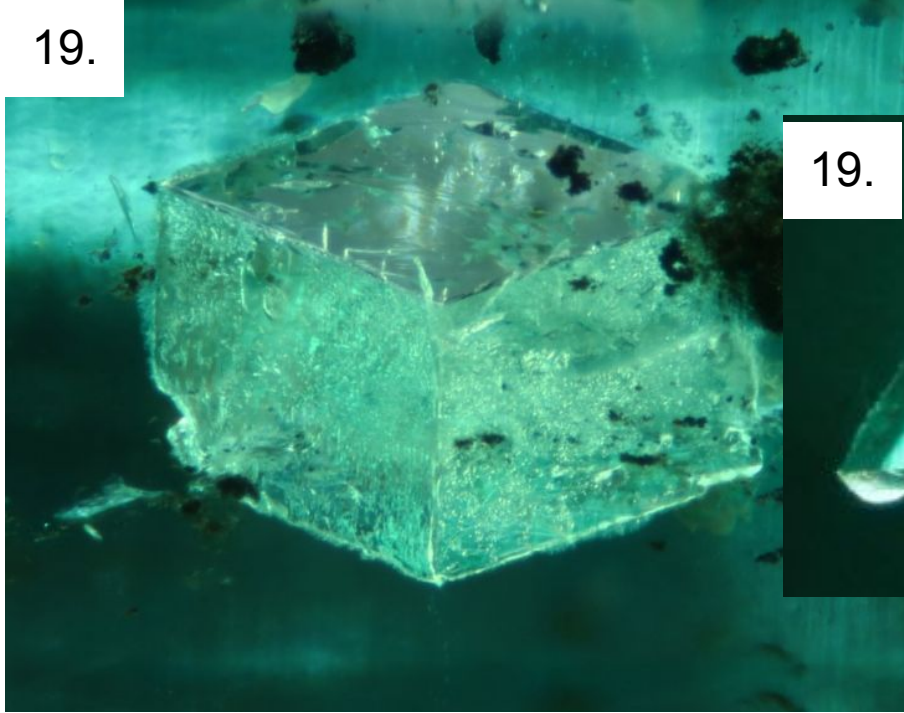


18.

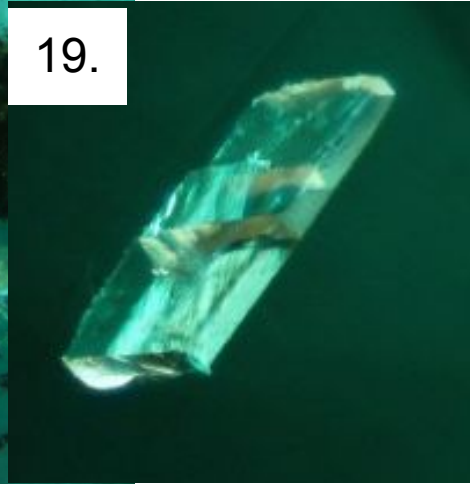


Station 3

19.



19.



Station 4

25.

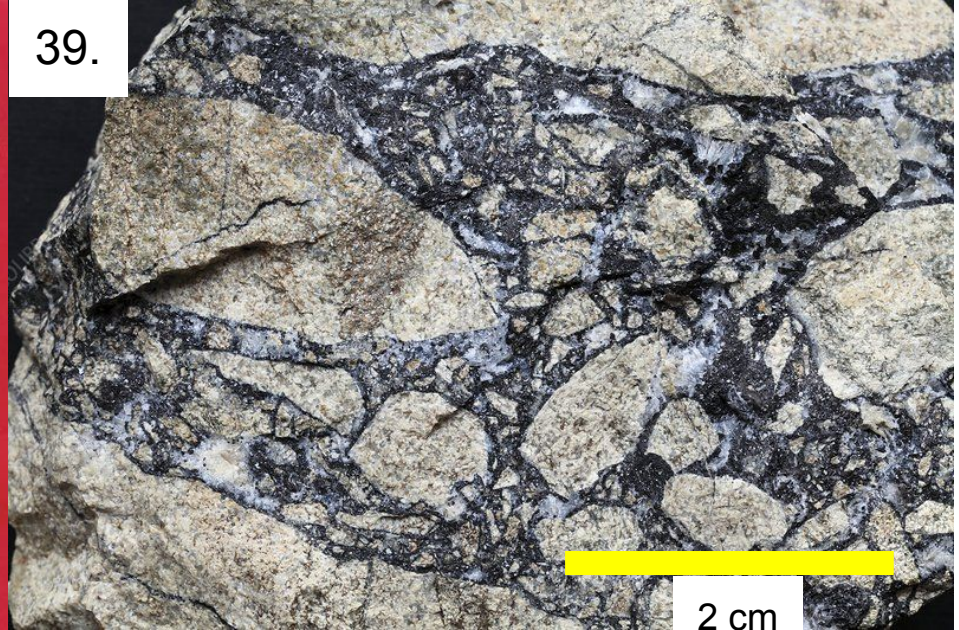


Station 6

38.



39.



Station 6

40A.



40B.



Station 7

46B.

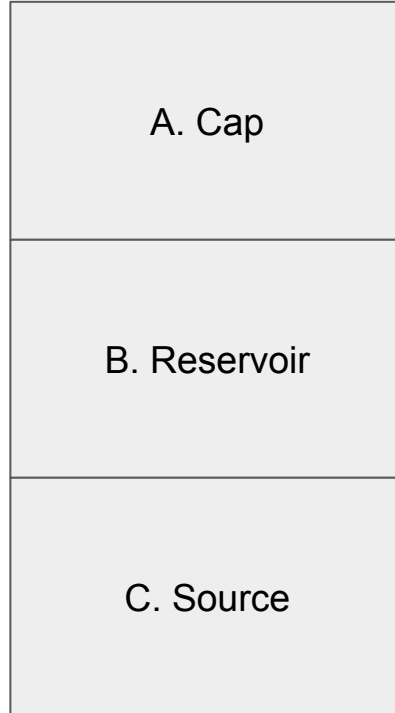


47B.

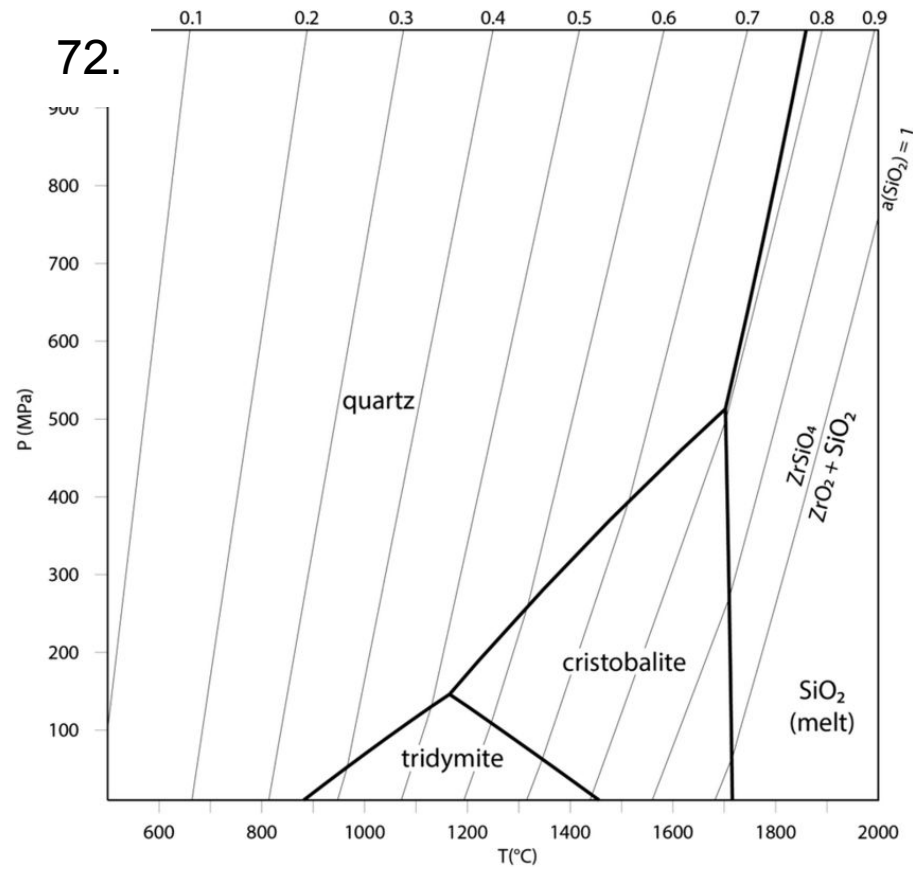


Station 7

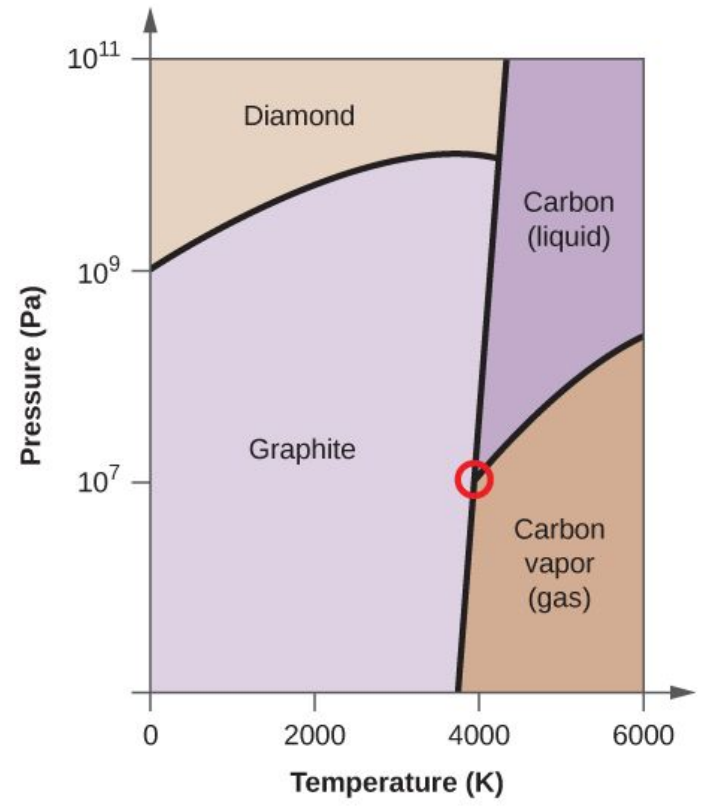
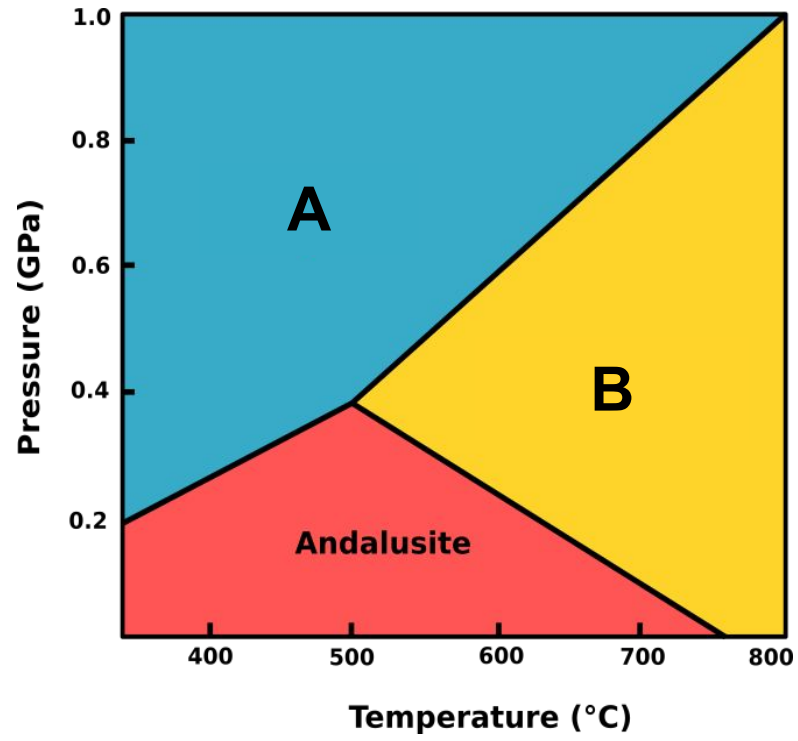
Core Sample Diagram



Station 10



Station 10



Station 12

85.

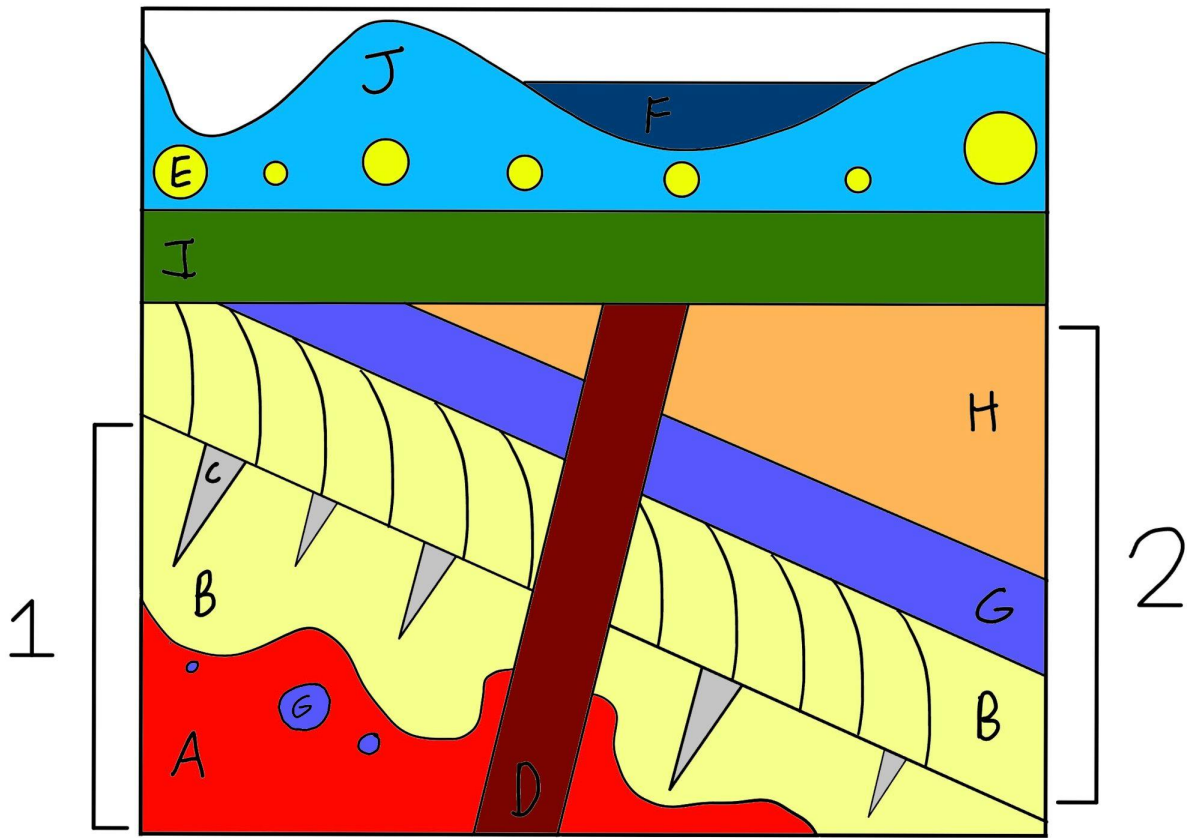


Station 12

91



Station 14



Station 14

Sandstone

Siltstone/Shale

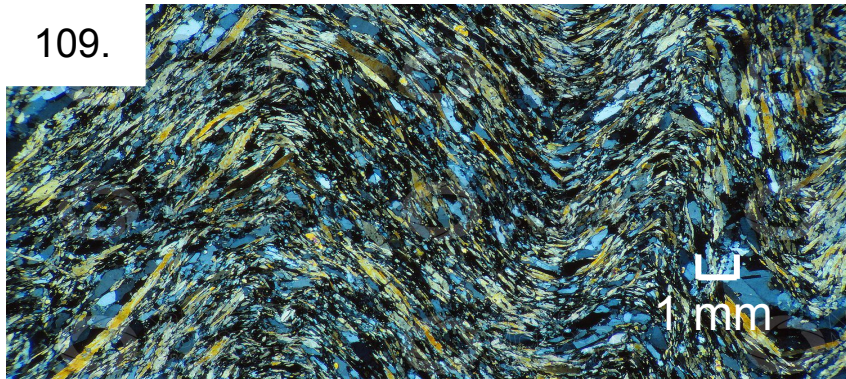
Shale
(fissile,
fine-grained)



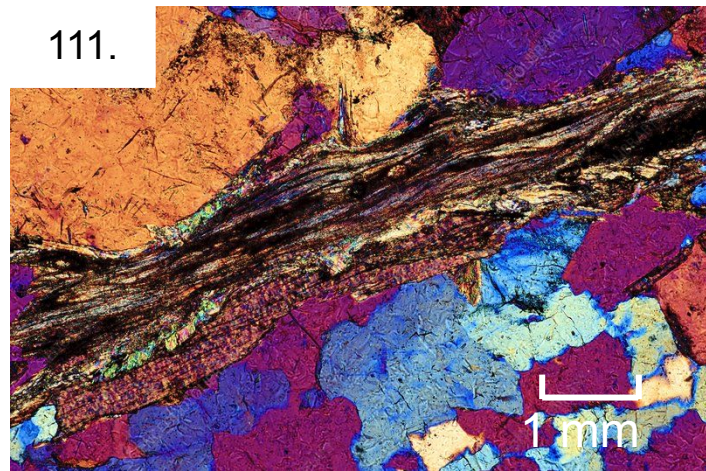
107.

Station 15

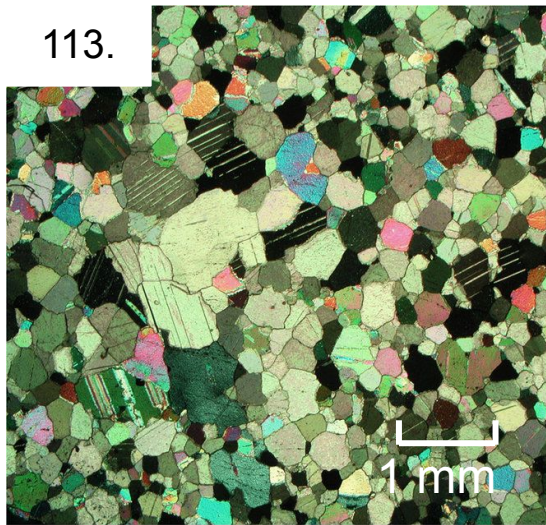
109.



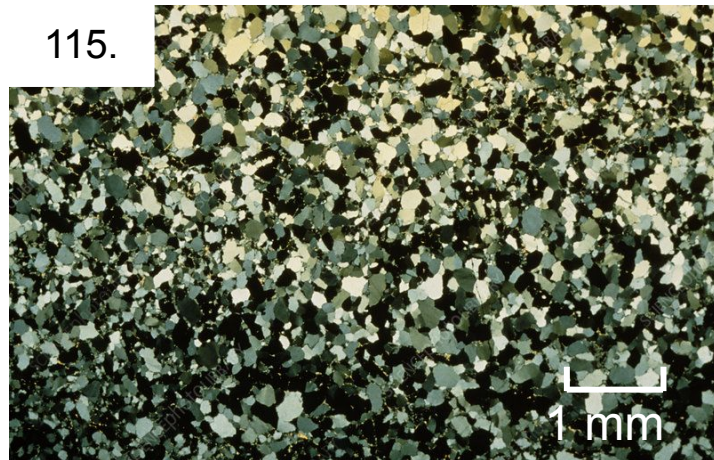
111.



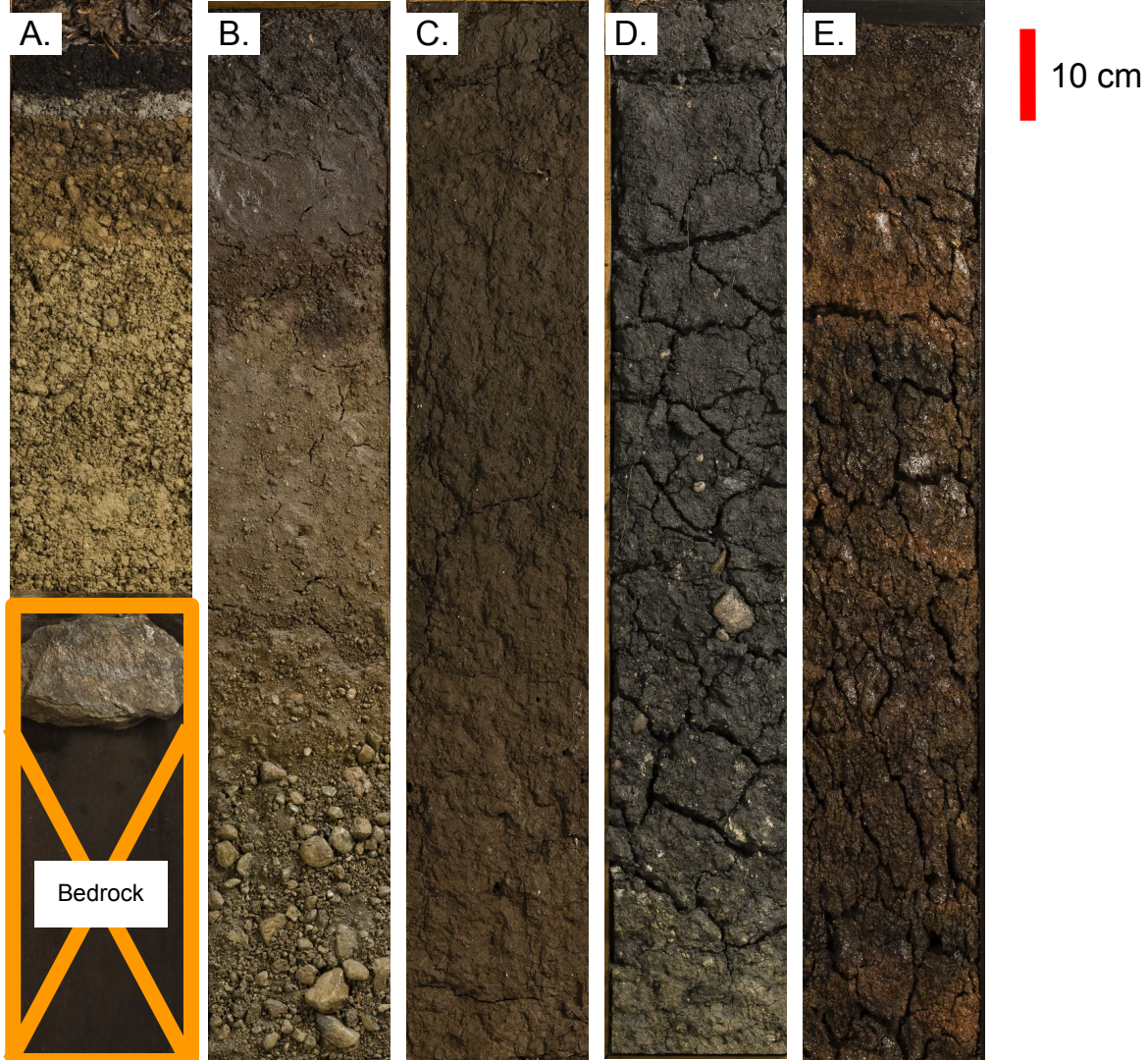
113.



115.

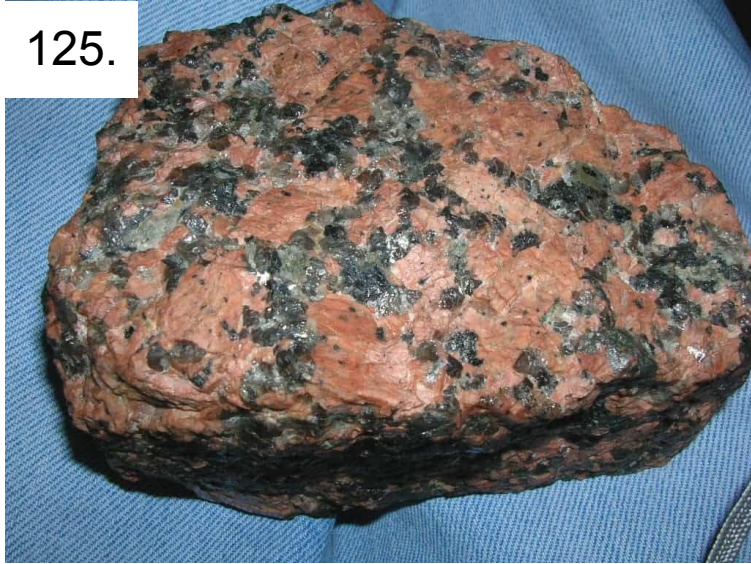


Station 16



Station 17

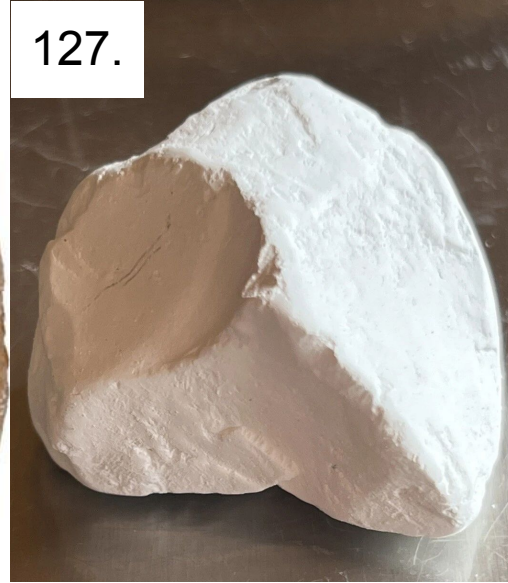
125.



126.



127.

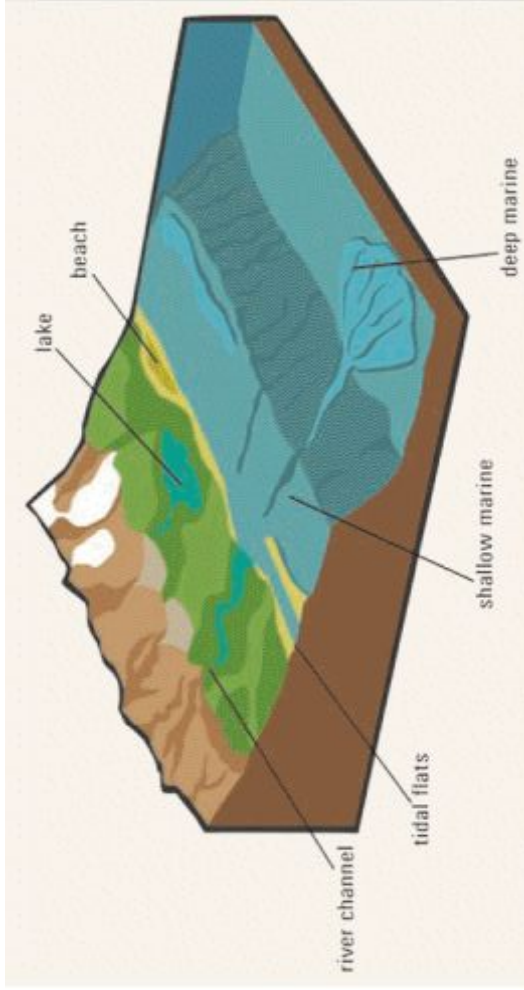


Station 17

131.



Station 18



Depositional Environment	Sediment	Sedimentary Structures	Sedimentary Rocks
133.	boulders, sand, mud; well-sorted and well-rounded	cross-bedding, ripple marks	conglomerate, sandstone, shale
134.	mud, carbonate sediment	marine fossils	
135.	boulders, sand, mud; variable sorting and rounding	cross-bedding, ripple marks, mudcracks	conglomerate, sandstone, shale

Station 18

136.

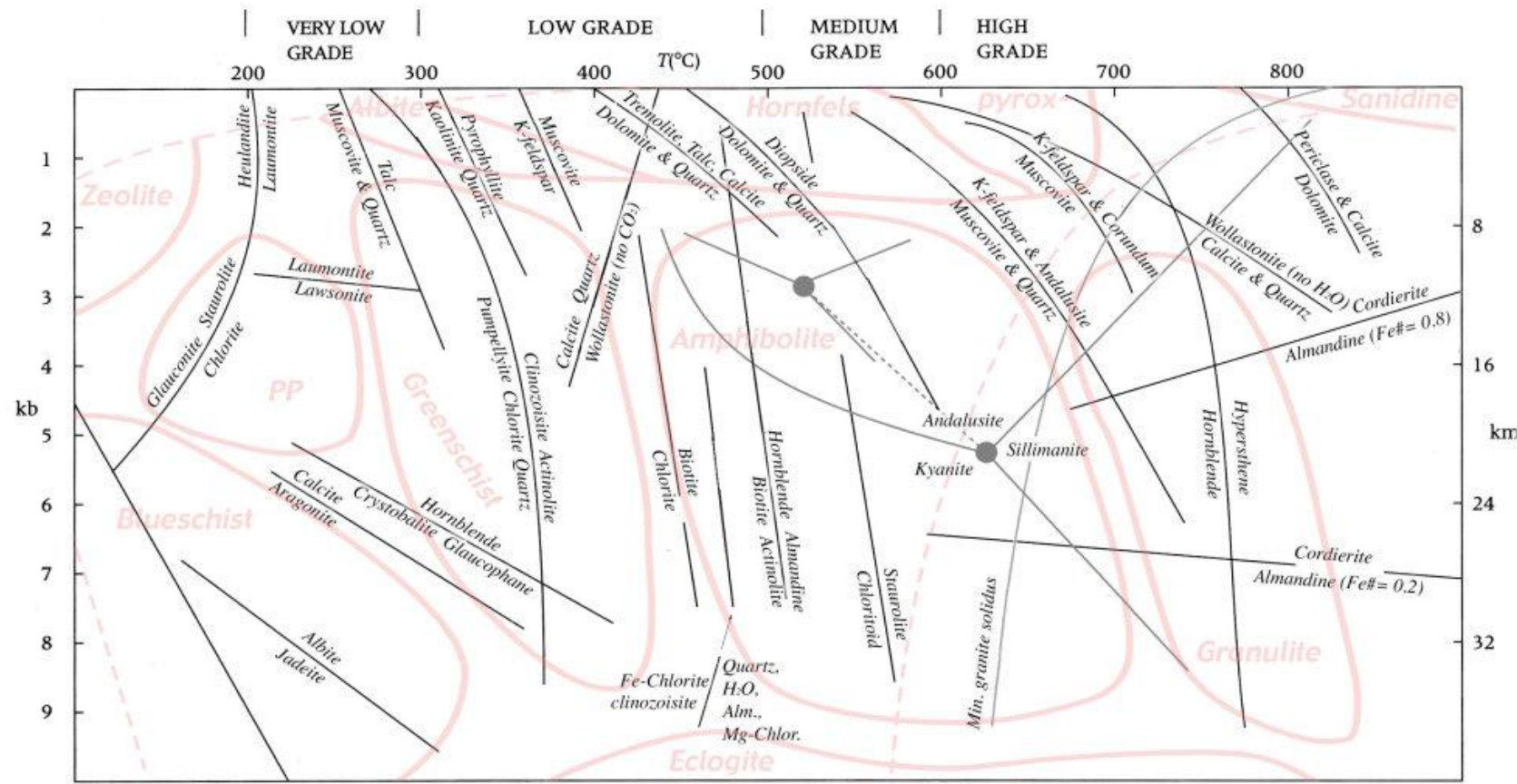


Station 18

137.



Station 19



Station 20

155.

